

RØDE HOUSE

2023 TECH PACK



BENTONVILLE, ARKANSAS

**THE MOMENTARY IS
A NEW AWARD-WINNING
CONTEMPORARY ART SPACE
AND PERFORMANCE VENUE
SITUATED IN THE FAST-
GROWING NEIGHBORHOOD
OF DOWNTOWN BENTONVILLE,
ARKANSAS.**

A satellite to Crystal Bridges Museum of American Art, the Momentary's campus was created on the site of a decommissioned 63,000-square-foot cheese factory, which was transformed into a mixed-use multidisciplinary platform for visual and performing arts, culinary experiences, festivals, artists-in-residence, and more.

As Crystal Bridges and the Momentary, we recognize our role as settlers and guests in the Northwest Arkansas region. We acknowledge the Caddo, Quapaw, and Osage as well as the many Indigenous caretakers of this land and water. We appreciate the enduring influence of the vibrant, diverse, and contemporary cultures of Indigenous peoples. We are conscious of the role in colonization that museums have played. As cultural institutions, we have a responsibility to engage in the dismantling of historical and systemic invisibility of Indigenous peoples past, present, and future. We choose to intentionally hold ourselves accountable to appropriate conversation, representation, connection, and education to facilitate a space of measurable change.



CONTACT

PRODUCTION

Will Eubanks, Production Manager
479.367.7525 (direct)
Will.Eubanks@theMomentary.org

David Embree, Technical Director & Head Audio
David.Embree@theMomentary.org

Isaac Palmer, Lighting & Rigging Supervisor
Isaac.Palmer@theMomentary.org

Chris Schultheis, Asst. Production Manager
Chris.Schultheis@theMomentary.org

ARTIST HOSPITALITY

Mischa Hutchings, Artist Liaison
Mischa.Hutchings@theMomentary.org

SECURITY

Meghan Wilcox, Protection Services Manager
Meghan.Wilcox@theMomentary.org

FOH / RETAIL

Melissa Busch, FOH Manager - Box Office
Melissa.Busch@theMomentary.org

Elizabeth Selders, Interim Director - Retail Operations
Elizabeth.Selders@theMomentary.org



RØDE HOUSE

A 250 (seated) to 600 (standing) capacity flexible-use venue for music, dance, theatre, film, lectures, and special events. Built with unique experiences in mind, at the heart of RØDE House is a 3,000 sq ft floor consisting of 10 motorized Serapid lifts, each able to be raised or lowered +/- 31" from center level. The flexibility of layout options creates a working and viewing space unlike any other, for both artist and audience.



DIRECTIONS, LOAD-IN, AND PARKING



DIRECTIONS

From I-49: Take the 8th Street exit (Exit 87) and head west. Turn right to follow the detour north on Moberly Lane, then turn left to head west on 5th Street. After passing J Street, turn left on E Street. There is a gravel parking lot just past 6th Street and the Momentary's main building.

LOAD-IN

Artists who are bringing in a substantial amount of equipment have the option to load in on the north side of the RØDE House. The venue is equipped with two 11'-6"W x 12'H bay doors which make it possible to load directly into RØDE House from trucks **with ramps or lift gates**. To access these doors from E Street, turn left into the small parking lot just north of the Momentary's loading dock as pictured to the left. Stay right as you drive around the building, being careful to avoid driving on the mural on the North Courtyard.

Artists may also load in to the loading dock, though a push through the Momentary's galleries is required.

HOUSE INVENTORY

AUDIO

POWER

[2] 120/208v; 3Ø; 200A; bare wire or Cam-lok

MAINS

[3] d&b V10P (L/C/R)

SUBS

[2] d&b V-SUB

FRONT FILLS

[4] d&b E6

SIDE FILLS

[8] d&b 10S-D

DELAYS

[2] d&b Yi7p

REAR FILLS

[2] d&b 10S-D

MONITORS

[4] d&b M6

[2] d&b M4

AMPLIFIERS

[4] d&b 30D (mains)

[1] d&b d80 (monitors)

[1] d&b d20 (monitors)

CONSOLE + STAGE BOX

[1] Yamaha QL1

[1] Yamaha RIO-3224-D2

RF MICROPHONES

[8] ULXD2 (Beta 58a capsules)

Additional house inventory and mic list available upon request.

LIGHTING

POWER

[2] 120/208v; 3Ø; 60A; DMX relay panels

[1] 120/208v; 3Ø; 400A; bare wire or Cam-lok

CONSOLE

[1] ETC GIO 24k

FIXTURES

[5] Elation Artiste Van Gogh Spot
380W LED, 7°-55°

[5] Elation Artiste DaVinci
270W LED, 6°-48°

[20] ETC ColorSource Spot
150W LED, 26°

[20] ETC ColorSource Spot
150W LED, 36°

[32] ETC ColorSource PAR
90W LED, WR diffusion

RIGGING

POWER

[1] 120/208v; 3Ø; 200A; bare wire or Cam-lok

MOTORS

[9] CM-Prostar 1-ton chain motor
30' chain, 16fpm

[1] Skjonberg motor controller
12-channel, w/ pendant

TRUSS

[16] 10' Tyler 12"x12" truss
Bolted, semi-gloss black

[2] 5' Tyler 12"x12" truss
Bolted, semi-gloss black

STAGE

DECK

[10] 6'1" deep Serapid lifts, varying widths
fully adjustable +/- 31" from center

[14] 3'x6' NivoFlex decks
0", +12", or +31" height



TECHNICAL DRAWINGS

RØDE HOUSE - PLAN VIEW

A NOTE ON SERAPID LIFTS

The RØDE House's Serapid floor system is completely customizable within its +/- 31" limit. However, because ADA accessibility is best at +12", we typically set up one of three ways:

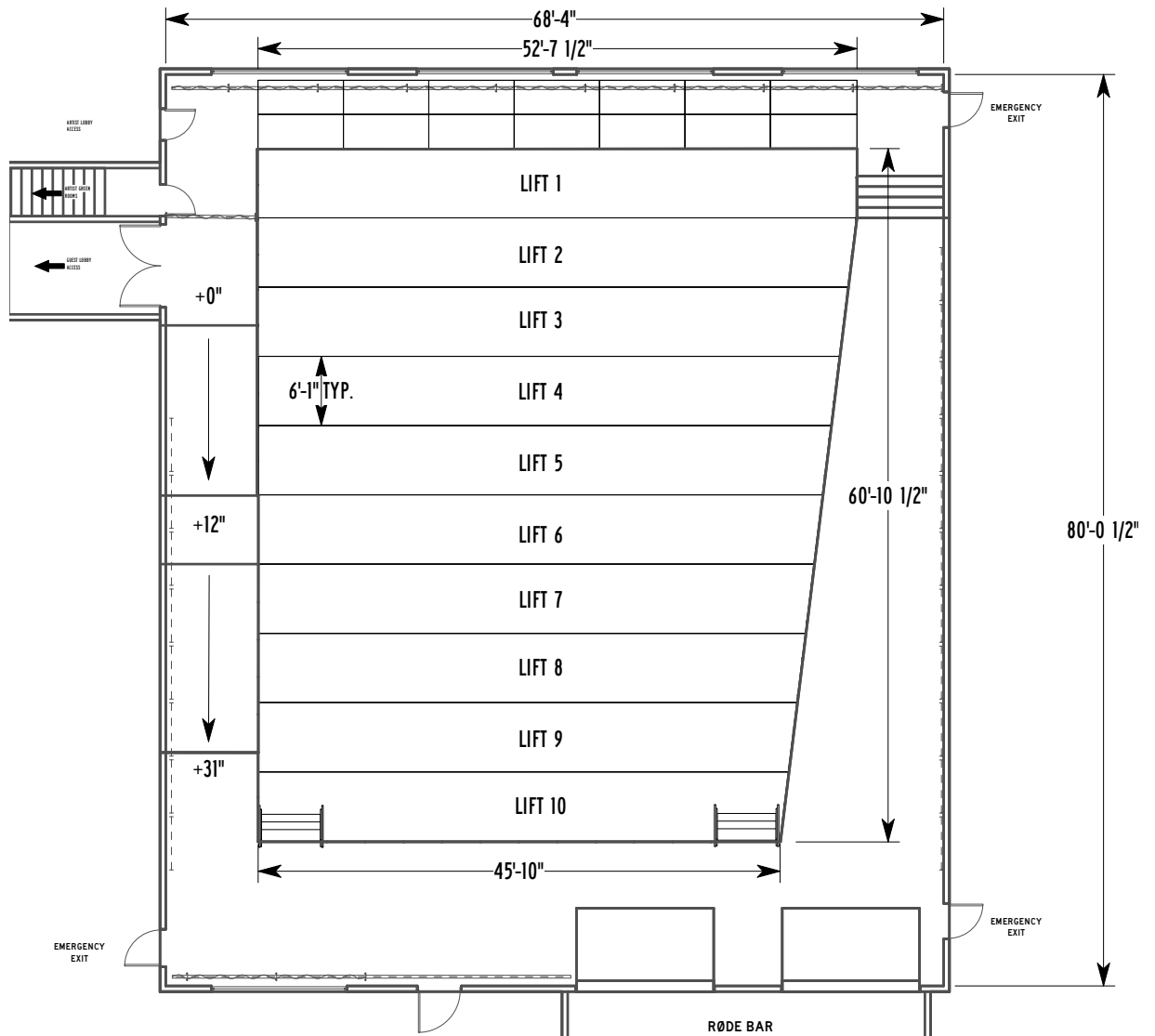
Flat floor - all lifts set to +12"

Lecture - lift 1 set to +31"; all other lifts set to +12"

Music - lifts 1-3 set to +31"; all other lifts set to +12"

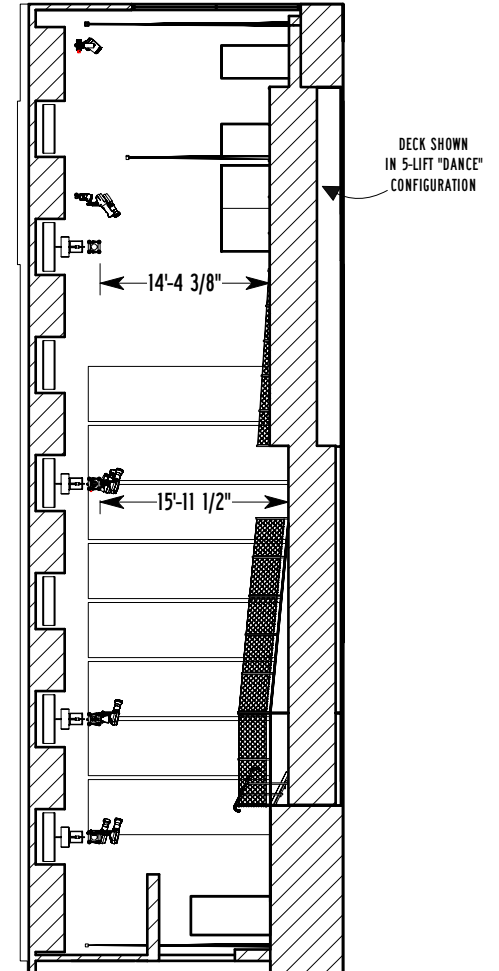
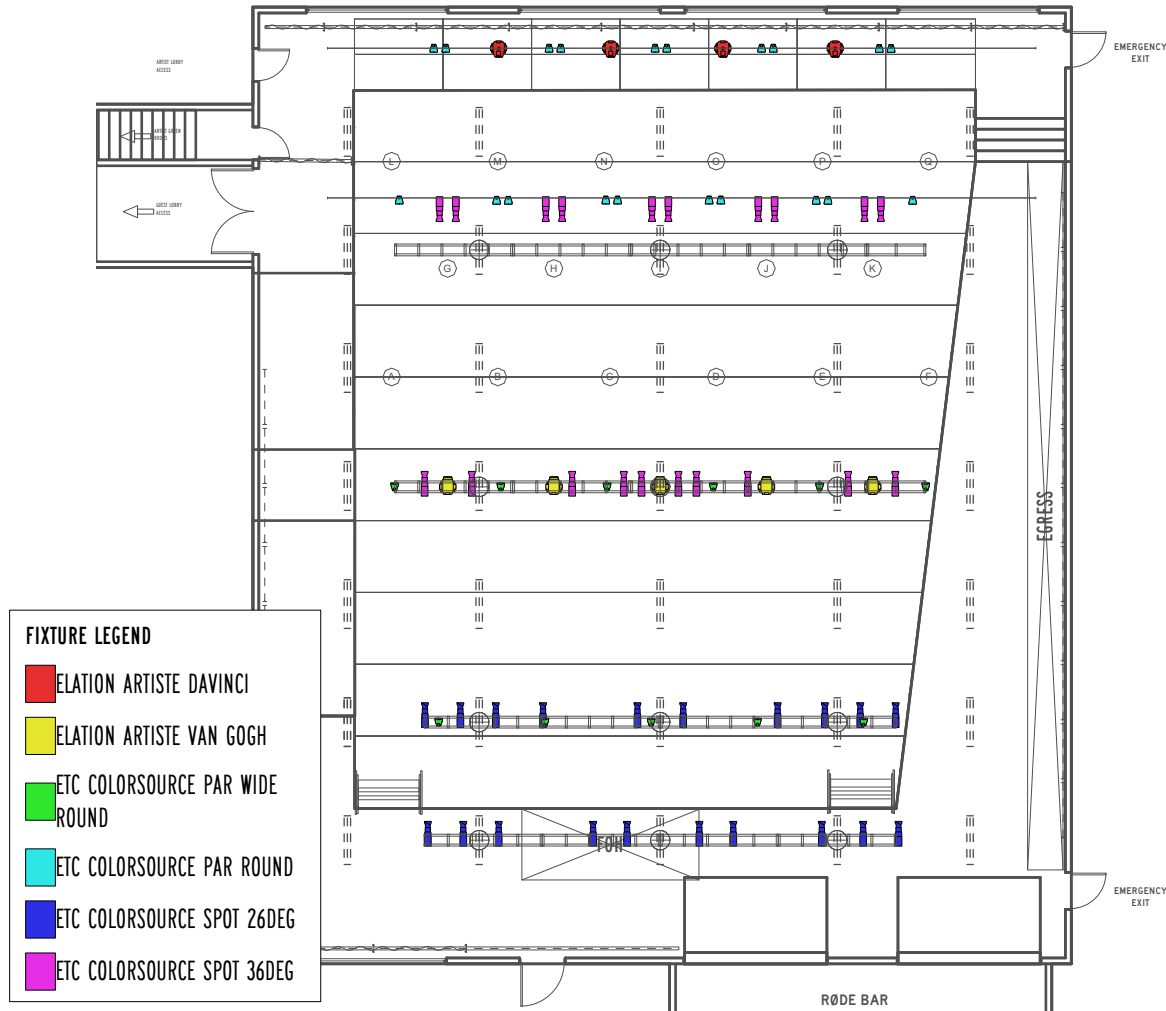
Dance - lifts 1-5 set to +31"; all other lifts set to +12"

For the safety of artists, staff, and guests, lifts are only mobilized prior to any setup taking place and after completion of strike. Lifts only move one at a time and cannot be moved during an event or performance.



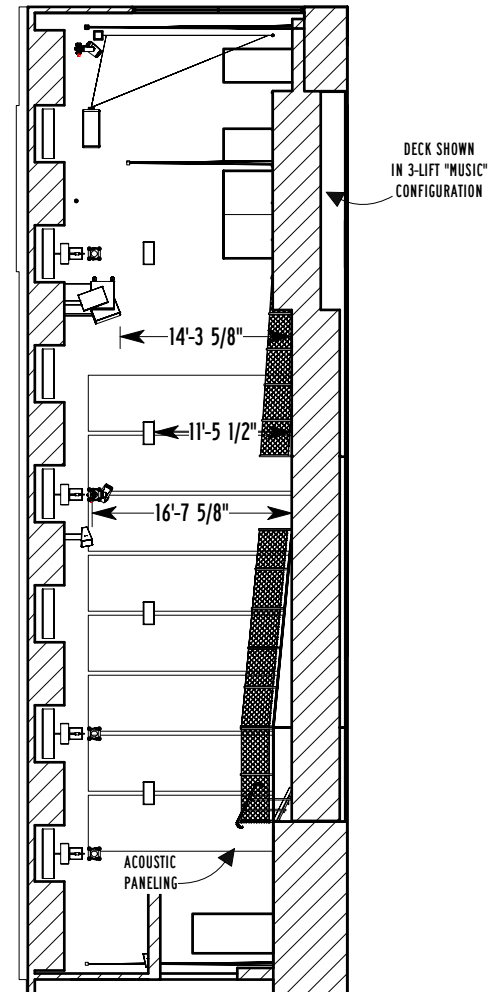
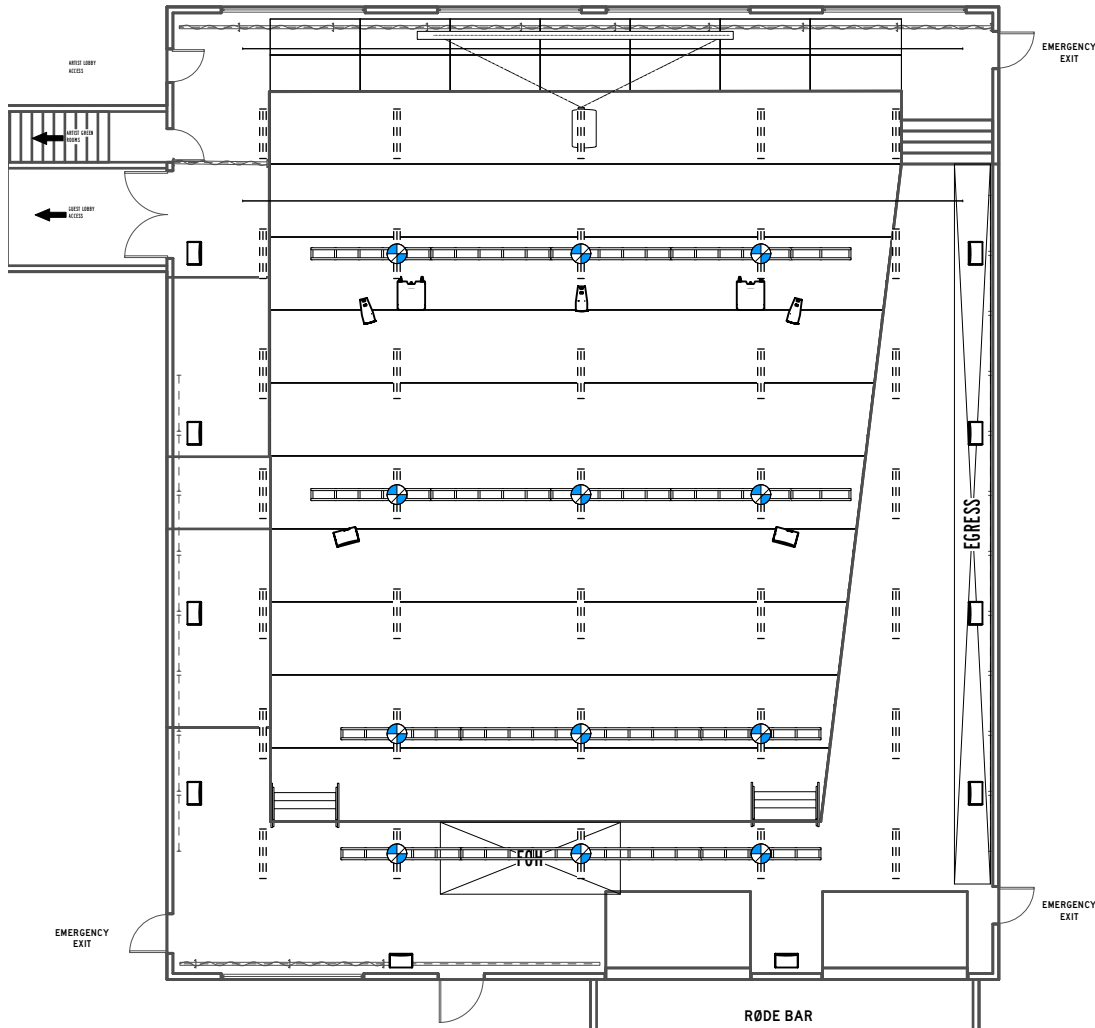
TECHNICAL DRAWINGS

LIGHTING - TYPICAL HOUSE PLOT



TECHNICAL DRAWINGS

AUDIO - HOUSE PLOT



ADDITIONAL INFO + HOUSE RULES



SPL LIMITS + NOISE CURFEW

The venue SPL limit is no more than 100dBA averaged across one hour. At no point should any peaks exceed 125dB.

Due to Bentonville city noise ordinance, unless otherwise advanced, outdoor concerts are subject to a **HARD STOP** at the following times:

Sunday-Thursday: 11:00pm

Friday-Saturday: Midnight

CREW

The Momentary will provide stage hands and technicians per rider/as advanced. All local labor is non-union.

One-hour meal breaks are required every 5 hours on the clock, and 15 minute breaks are required every 2-2.5 hours between meal breaks. There are no restrictions on labor allocation (hands can hang lights, etc.), and we're happy to help your crew allocate labor as needed, based on each hand's particular skill set.

GREEN ROOMS + HOSPITALITY

Specific green room and hospitality requirements will be met on a case-by-case basis as advanced. Please contact the Artist Liaison for more information.

WIFI (CAMPUS-WIDE)

SSID

Momentary Guest

Password

n/a - public WiFi

PHYSICAL ADDRESS

The Momentary

507 SE E Street

Bentonville, AR 72712

ADDITIONAL VENUES

MOMENTARY GREEN

OUTDOOR

CAPACITY 5,000 / 2,500 (standing / seated)

A 42,000 sq ft terraced outdoor space featuring an 80'x60' stage is the host of the Momentary's premiere Live on the Green concert series.

FERMENTATION HALL

INDOOR

CAPACITY 250 / 125

A state-of-the-art black box theater with a d&b Soundscapes audio system, high ceilings, and great acoustics - perfect for immersive, intimate performances.

TULIP BARN

OUTDOOR

CAPACITY 320 / 150

A temporary wooden pavilion, in the shape of a traditional Dutch barn, 78' x 64'.

ARVEST BANK COURTYARD

OUTDOOR

CAPACITY 500

Shaded picnic table seating suited for small concerts, festivals, and special events; includes built-in video system that projects curated art experiences onto our five-story tower.

QUONSET HUT

OUTDOOR

CAPACITY 75

A covered pavilion for intimate outdoor performances.

